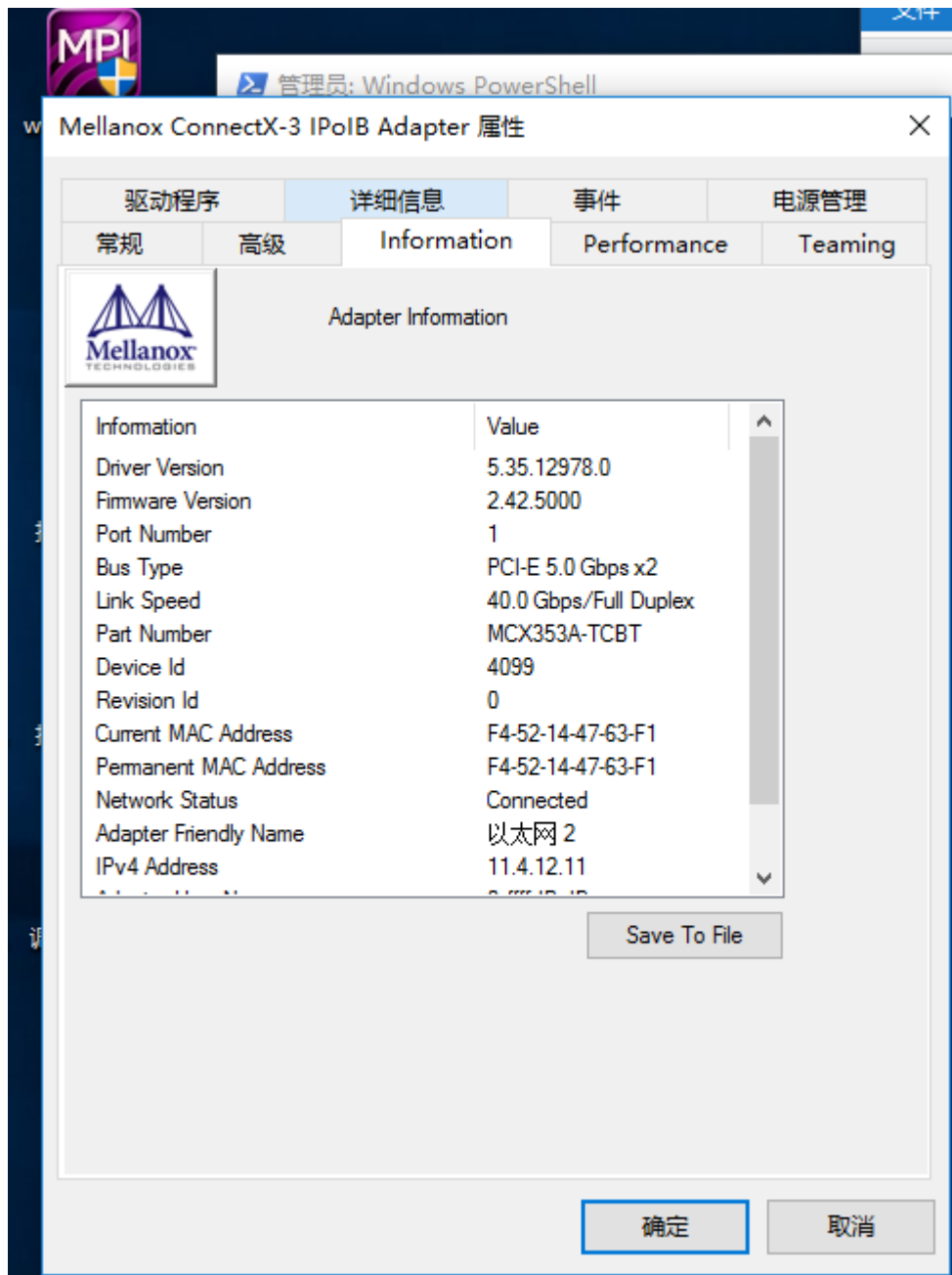


Adapter information:



Vstat result:

```
选择管理员: 命令提示符
Connection accepted.

C:\Windows\system32>vstat

hca_idx=0
uplink={BUS=PCI_E Gen2, SPEED=5.0 Gbps, WIDTH=x2, CAPS=8.0*x8}
MSI-X={ENABLED=1, SUPPORTED=128, GRANTED=10, ALL_MASKED=N}
vendor_id=0x02c9
vendor_part_id=4099
hw_ver=0x0
fw_ver=2.42.5000
PSID=MT_1100110028
node_guid=f452:1403:0047:6a70
num_phys_ports=1
  port=1
    port_guid=f452:1403:0047:6a71
    port_state=PORT_ACTIVE (4)
    link_speed=10.00 Gbps
    link_width=4x (2)
    rate=40.00 Gbps
    real_rate=32.00 Gbps (QDR)
    port_phys_state=LINK_UP (5)
    active_speed=10.00 Gbps
    sm_lid=0x0004
    port_lid=0x0001
    port_lmc=0x0
    transport=IB
    max_mtu=4096 (5)
    active_mtu=4096 (5)
    GID[0]=fe80:0000:0000:0000:f452:1403:0047:6a71
```

Test result:

```
管理: 命令提示符
Microsoft Windows [版本 10.0.10586]
(c) 2016 Microsoft Corporation. 保留所有权利。

C:\Windows\system32>iperf3.exe -c 11.4.12.11 -t 10
'iperf3.exe' 不是内部或外部命令，也不是可运行的程序
或批处理文件。

C:\Windows\system32>cd C:\Users\Hive Graphics\Desktop\iperf-3.1.3-win64

C:\Users\Hive Graphics\Desktop\iperf-3.1.3-win64>iperf3.exe -c 11.4.12.11 -t 10
Connecting to host 11.4.12.11, port 5201
[ 4] local 11.4.12.11 port 49736 connected to 11.4.12.11 port 5201
[ ID] Interval      Transfer    Bandwidth
[ 4]  0.00-1.00  sec    715 MBytes  5.99 Gbits/sec
[ 4]  1.00-2.00  sec    762 MBytes  6.41 Gbits/sec
[ 4]  2.00-3.00  sec    760 MBytes  6.37 Gbits/sec
[ 4]  3.00-4.00  sec    808 MBytes  6.73 Gbits/sec
[ 4]  4.00-5.00  sec    846 MBytes  7.09 Gbits/sec
[ 4]  5.00-6.00  sec    847 MBytes  7.10 Gbits/sec
[ 4]  6.00-7.00  sec    845 MBytes  7.08 Gbits/sec
[ 4]  7.00-8.00  sec    854 MBytes  7.16 Gbits/sec
[ 4]  8.00-9.00  sec    859 MBytes  7.20 Gbits/sec
[ 4]  9.00-10.00 sec    866 MBytes  7.26 Gbits/sec
-----
[ ID] Interval      Transfer    Bandwidth
[ 4]  0.00-10.00 sec    7.97 GBytes  6.85 Gbits/sec
[ 4]  0.00-10.00 sec    7.97 GBytes  6.84 Gbits/sec
sender
receiver

iperf Done.
```

```
管理员: 命令提示符 - iperf3.exe -s -B 11.4.12.11
C:\Program Files\Mellanox\WinMFT>cd C:\Users\Hive Graphics\Desktop\iperf-3.1.3-win64
C:\Users\Hive Graphics\Desktop\iperf-3.1.3-win64>iperf3.exe -s -B 11.4.12.11
-----
Server listening on 5201
-----
Accepted connection from 11.4.12.11, port 49735
[ 5] local 11.4.12.11 port 5201 connected to 11.4.12.11 port 49736
[ ID] Interval      Transfer    Bandwidth
[ 5] 0.00-1.00 sec    714 MBytes  5.99 Gbits/sec
[ 5] 1.00-2.00 sec    763 MBytes  6.40 Gbits/sec
[ 5] 2.00-3.00 sec    760 MBytes  6.37 Gbits/sec
[ 5] 3.00-4.00 sec    809 MBytes  6.78 Gbits/sec
[ 5] 4.00-5.00 sec    846 MBytes  7.09 Gbits/sec
[ 5] 5.00-6.00 sec    847 MBytes  7.10 Gbits/sec
[ 5] 6.00-7.00 sec    844 MBytes  7.08 Gbits/sec
[ 5] 7.00-8.00 sec    854 MBytes  7.16 Gbits/sec
[ 5] 8.00-9.00 sec    859 MBytes  7.20 Gbits/sec
[ 5] 9.00-10.00 sec   866 MBytes  7.26 Gbits/sec
[ 5] 10.00-10.00 sec   0.00 Bytes  0.00 bits/sec
-----
[ ID] Interval      Transfer    Bandwidth
[ 5] 0.00-10.00 sec   0.00 Bytes  0.00 bits/sec
[ 5] 0.00-10.00 sec   7.97 GBytes 6.84 Gbits/sec
-----
Server listening on 5201
-----
Accepted connection from 11.4.12.11, port 49741
[ 5] local 11.4.12.11 port 5201 connected to 11.4.12.11 port 49742
[ 7] local 11.4.12.11 port 5201 connected to 11.4.12.11 port 49743
```